

OLIVE TREE - PARCEL 5D

BEING A REPLAT OF A PORTION OF OLIVE TREE - PHASE 5A/6B
OF THE RIVER BRIDGE P.U.D., (P.B. 76, PGS. 102 - 104)
LYING IN SECTION 10, TOWNSHIP 44 SOUTH, RANGE 42 EAST

CITY OF GREENACRES, PALM BEACH COUNTY, FLORIDA.

JANUARY 1996

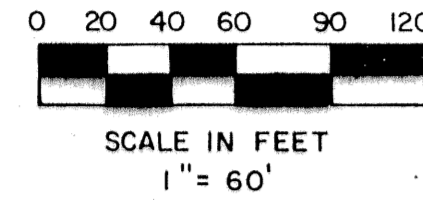
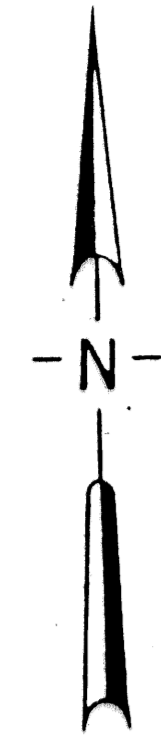
SHEET 2 OF 4

128

STATE OF FLORIDA
COUNTY OF PALM BEACH

This plat was filed for record at _____, this day of _____, 1996, and duly recorded in Plat Book No. _____ on Pages _____ thru _____.

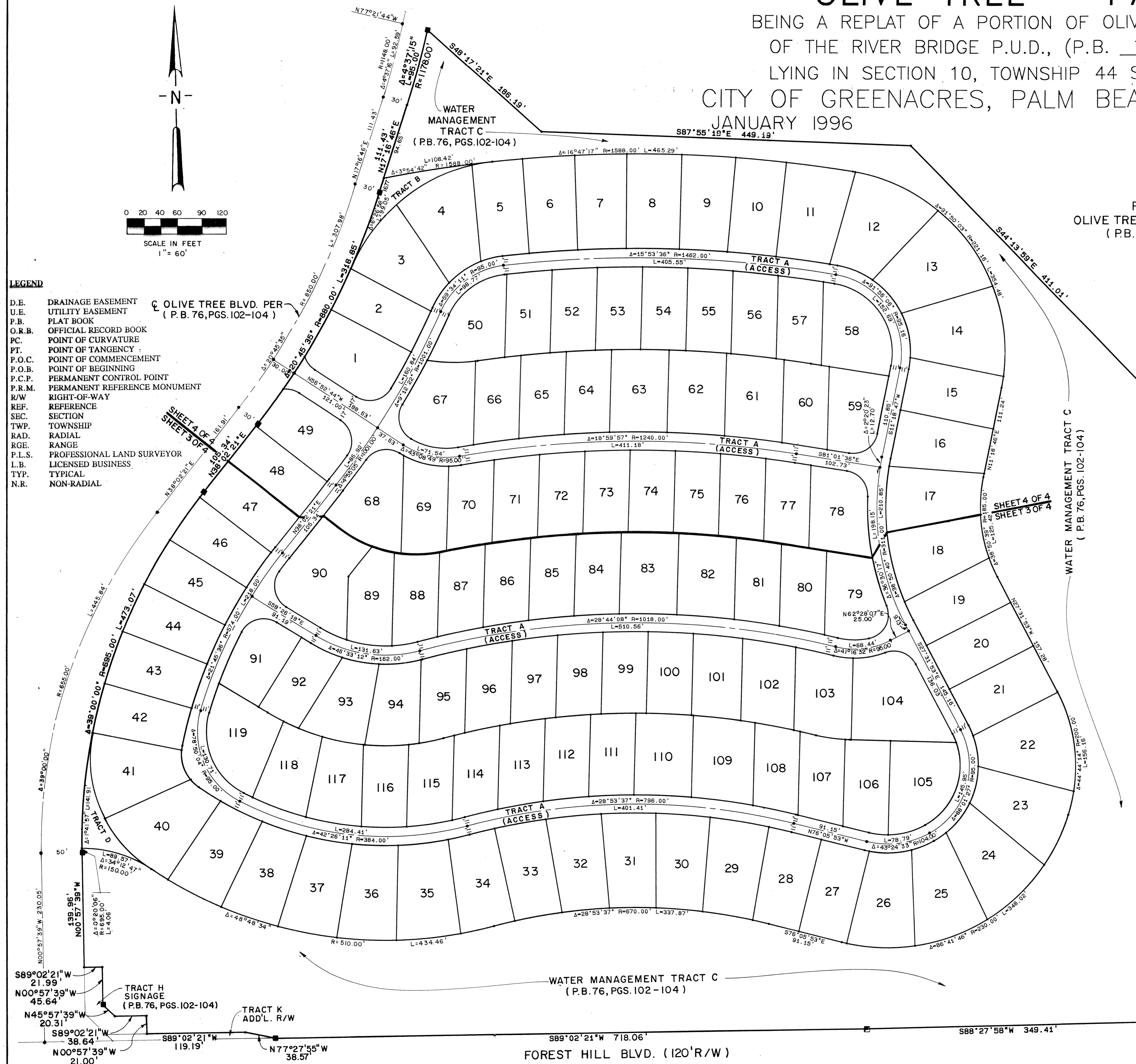
DOROTHY H. WILKEN
Clerk Circuit Court
By: _____



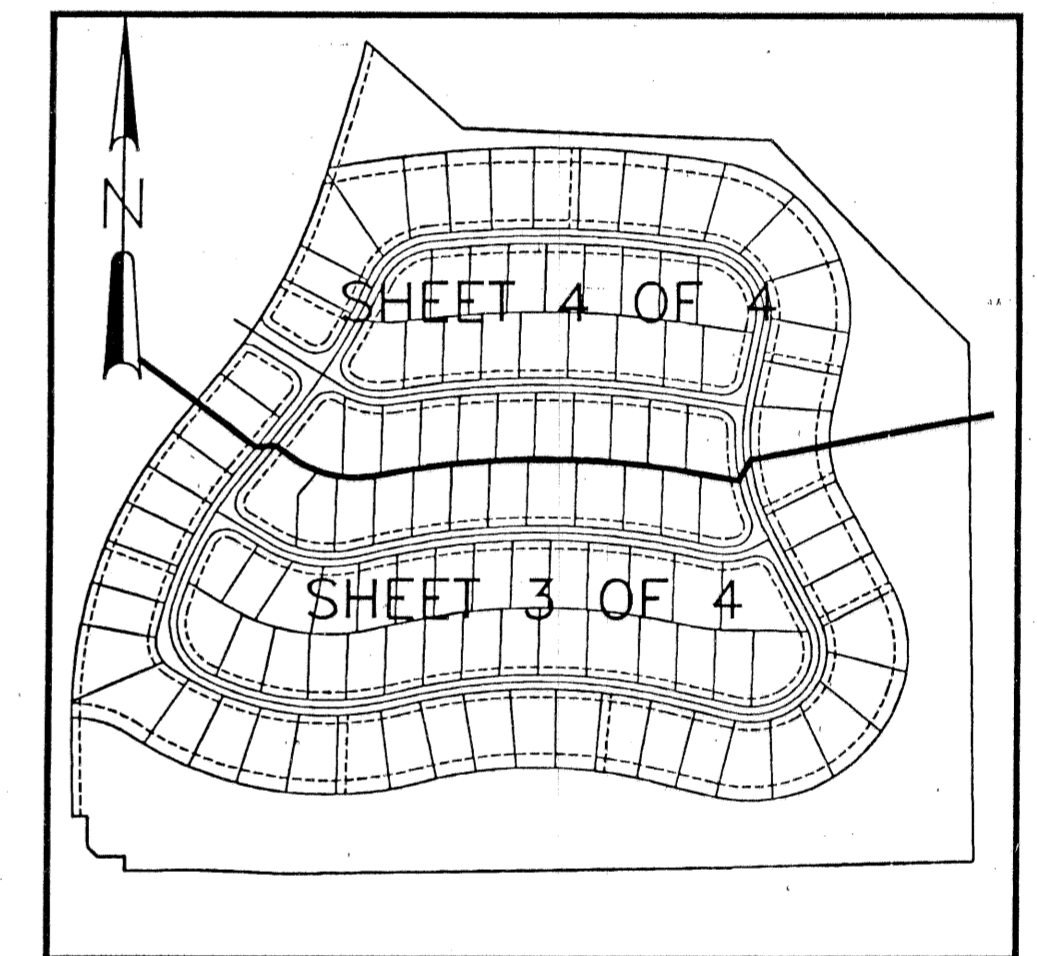
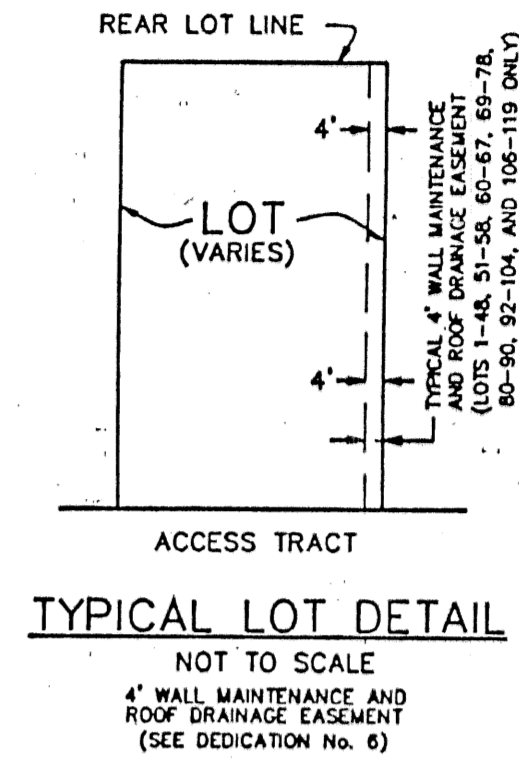
LEGEND

- D.E. DRAINAGE EASEMENT
- U.E. UTILITY EASEMENT
- P.B. PLAT BOOK
- O.K.B. OFFICIAL RECORD BOOK
- P.C. POINT OF CURVATURE
- P.T. POINT OF TANGENCY
- P.O.C. POINT OF COMMENCEMENT
- P.O.B. POINT OF BEGINNING
- P.C.P. PERMANENT CONTROL POINT
- P.R.M. PERMANENT REFERENCE MONUMENT
- R/W RIGHT-OF-WAY
- REF. REFERENCE
- SEC. SECTION
- TWP. TOWNSHIP
- RAD. RADIAL
- RGE. RANGE
- P.L.S. PROFESSIONAL LAND SURVEYOR
- L.B. LICENSED BUSINESS
- TYP. TYPICAL
- N.R. NON-RADIAL

OLIVE TREE BLVD. PER (P.B. 76, PGS. 102-104)

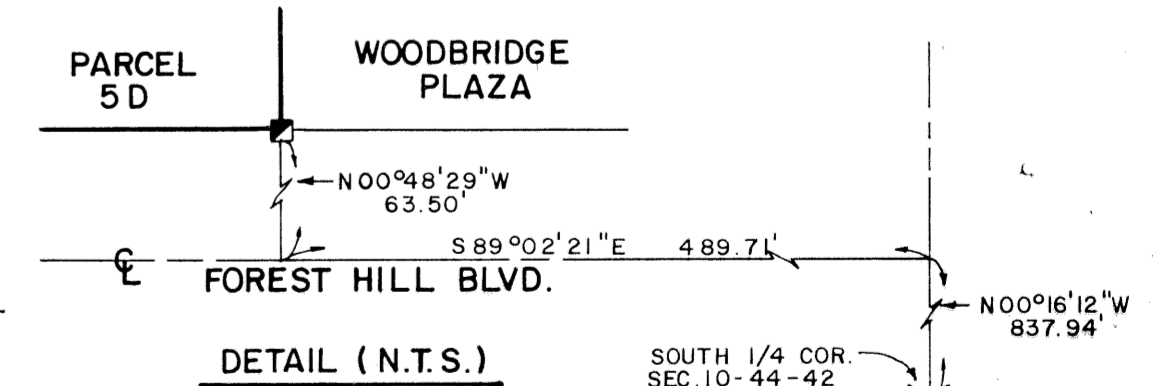


PARCEL 5C
OLIVE TREE - PHASE 5A/6B
(P.B. 76, PGS. 102-104)



SHEET LOCATION MAP
NOT TO SCALE

NOTE: MASTER CONTROL SHEET
(SEE INDIVIDUAL SHEETS FOR COMPLETE LOT ANNOTATION AND EASEMENT LOCATIONS.)



PETSCHÉ & ASSOCIATES, INC.
Professional Engineers - Land Surveyors - Development Consultants - Testing Services
2581 Metrocentre Boulevard, Suite 6, West Palm Beach, Florida 33407 (407) 640-3800
6799 Overseas Highway, Suite 7, Marathon, Florida 33050 (305) 743-5788
1600 Reubud Boulevard, Suite 402, McKinney, Texas 75069 (214) 562-9606

OLIVE TREE - PARCEL 5D

SECTION 10, TOWNSHIP 44S., RANGE 42E.
CITY OF GREENACRES, FLORIDA

Drawn by: D.W.O./M.E.H.	Date: SEPT. 1995	SCALE: 1" = 60'	JOB NUMBER: 95-052	SHEET OF 2 OF 4
Designed by: R. HAGLER	Checked by:			

SUBDIVISION * OLIVE TREE
 BOOK 76 PAGE 128
 FLOOD MAP *
 ZONING *
 QUAD *
 SE *
 PUD NAME *